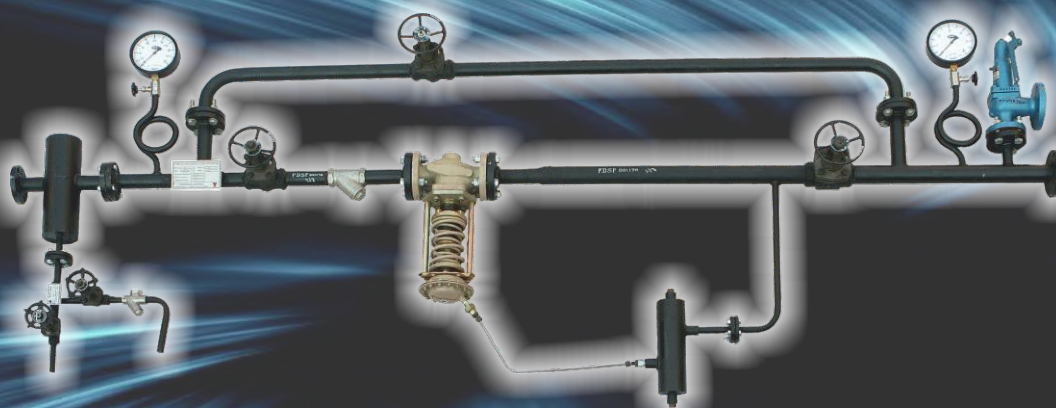




Energy Environment Solutions for Sustainable Growth

TPRS



Pressure Reducing Station

STEAM ENGINEERING

Introduction

Thermax Pressure Reducing Station (TPRS) is a prefabricated ready to assemble module comprises of Direct acting pressure regulating valve, isolation valves, pipes and fittings intended to reduce steam pressure to designed conditions.

Features

- Designed as per best steam engineering practices
- Safety valve sized for full discharge capacity of the PRS
- Specially designed flow divider to ensure low noise levels
- Rugged in design
- Can be used in hazardous area without any electrical connections
- Operates even in low flow conditions
- Quick response to pressure changes
- Ready to install i.e. reduces installation time and field engineering
- Maintenance free and user friendly
- Both IBR certified and non IBR PRS available

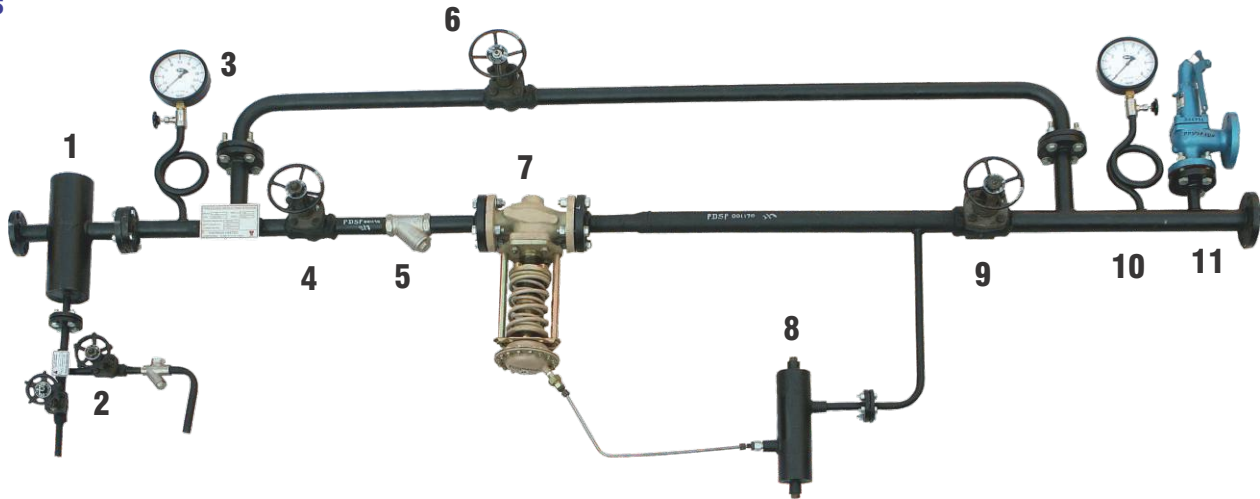
Technical Specification

Design Pressure :	Inlet	Outlet
	10.5 kg/cm ²	3.5 kg/cm ²
	17.5 kg/cm ²	8 kg/cm ²
Design Temperature :	Saturated steam temperature	
Capacity :	100 - 8000 kg/h and higher	
Size :	15 - 200 NB and higher	

Application

- Process applications with continuous steady steam requirement
- Where high accuracy of control is not required
- Where electricity & compressed air are not easily available
- Can be used even in hazardous area.
- This is a low maintenance system where skilled operators are not available

Components



Sr No	Components
1	Moisture Separator
2	Thermodynamic Trap Module
3	Inlet Pressure Gauge with Siphon and Valve
4	Inlet Valve
5	Strainer
6	Bypass Valve

Sr No	Components
7	Pressure Reducing Valve (PRV)
8	Condensate Pot
9	Outlet Valve
10	Outlet Pressure Gauge with Siphon and Valve
11	Safety Relief Valve

Material List

Sr No	Description	Material of Construction	Specifications
1	Pipe	Forged Steel	ASTM A106 Gr. B
2	Flanges	Forged Steel	ASTM A105 / Equivalent *
3	Gate / Globe Valves or Bellow Seal Valves **	Cast Steel body SS trim Cast Steel body, SS Stellite trim and bellow in Titanium steel material	ASTM A216 Gr. WCB
4	Direct Acting PRV	Cast Steel body SS trim	ASTM A216 Gr. WCB
5	Safety Valve	Cast Steel body SS trim	ASTM A216 Gr. WCB

* Flanges may be fabricated from boiler quality plates if design standards permit it.

** Bellow seal valves are alternative to cast steel gate / globe valves if specified.



www.thermaxglobal.com

Ver. 1 - Jun 2020

Registered Office

D-13, MIDC Industrial Area,
R D Aga Road, Chinchwad,
Pune 411019, India

enquiry@thermaxglobal.com

Customer Care: 1800-209-0115



www.linkedin.com/company/thermax

Thermax Business Portfolio

- Heating
- Cooling
- Steam Engineering
- Air Pollution Control
- Chemicals
- Water and Wastewater Solutions
- Solar
- Power

This brochure presents only some of our products and we reserve the right to amend any product details without notice. The photographs used in the brochure are indicative and may not match the actual plant.

© Thermax Limited, 2020