



## Energy Environment Solutions for Sustainable Growth

# Float Trap WO 1011 & 1211



### STEAM ENGINEERING

#### INTRODUCTION

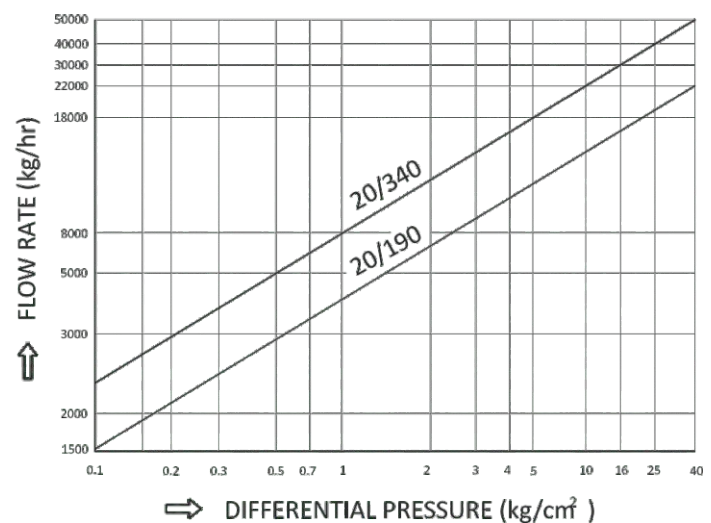
Float controlled steam trap RIFOMat-WO is a maintainable buoyancy operated steam trap having continuous modulated discharge. The steam trap is designed to handle large steam condensate loads at very low available pressure differential.

The steam trap is best suited for draining condensate from process heating equipment like heat exchangers, evaporators and re-boilers. Typical applications are in sugar industry, refineries, petro-chemicals and all process industries.

#### FEATURES

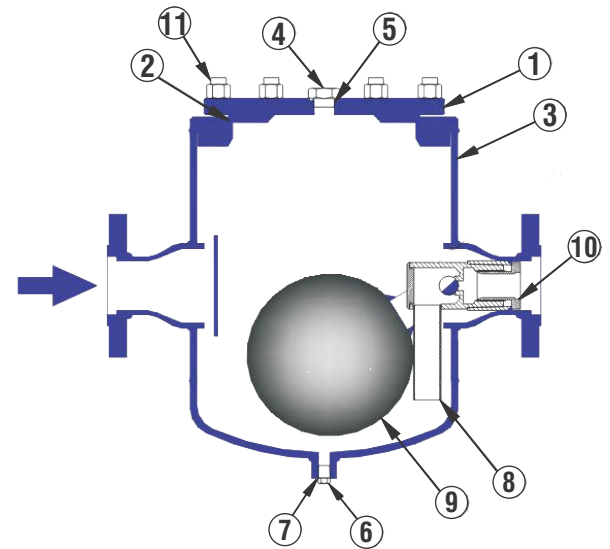
- Very high resistance to water hammer.
- Specially designed Rotary slide valve ensures modulating flow controls at various loading conditions.
- Highly recommended for very low differential pressure & very high condensate load condition.
- Increasing level opens and decreasing level closes the outlet port.

#### CAPACITY CHART



# MATERIALS

No	Component	Material	Specification
1	Cover Plate	Alloy Steel	ASTM A516 Gr. 70
2	Gasket	Alloy Steel	ASTM A1008
3	Body	Alloy Steel	ASTM A106 Gr. B
4	Vent Plug	Steel	ASTM A675 Gr. 70
5	Gasket (SWG)	SS	SS 304+ Graphite
6	Drain Plug	Steel	ASTM A675 Gr. 70
7	Drain Tube	Steel	ASTM A276 Gr.304
8	Immersion Tube	Steel	ASTM A321 Gr.304
9	Float	Steel	ASTM A240 Gr.304
10	Control Screw	Steel	ASTM A479 Tp.304
11	Stud & Hex Nut	Steel	ASTM A193 Gr.B16
			ASTM A194 Gr.8M



# BODY DESIGN CONDITIONS

Parameter	W0-1011	W0-1211
Maximum Operating Pressure - PMO (kg/cm <sup>2</sup> )	16	40
Maximum Operating Temperature - TMO (°C)	425	425

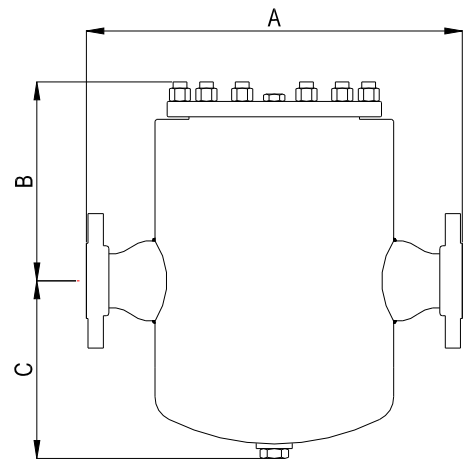
### End Connections :

Flanged end as per ASME B16.5 - others on request

Size : DN 50 / DN 80 / DN 100

Certifications : Indian Boiler Regulation (IBR) on request.

# DIMENSIONS & WEIGHT



Size	A	B	C
DN 50	430	230	210
DN 80	450	230	210
DN 100	450	230	210

**Weight :** Maximum weight of trap is 75 Kg.

Product of RIFOX GmbH - A THERMAX group company



**THERMAX**

[www.thermaxglobal.com](http://www.thermaxglobal.com)

Publication No. :

Ver. 0 - AUG 2019

### Registered Office

D-13, MIDC Industrial Area,  
R D Aga Road, Chinchwad,  
Pune 411019, India

[enquiry@thermaxglobal.com](mailto:enquiry@thermaxglobal.com)

Customer Care: 1800-209-0115



[www.linkedin.com/company/thermax](http://www.linkedin.com/company/thermax)

### Thermax Business Portfolio

- Heating
- Cooling
- Steam Engineering
- Air Pollution Control
- Chemicals
- Water and Wastewater Solutions
- Solar
- Power